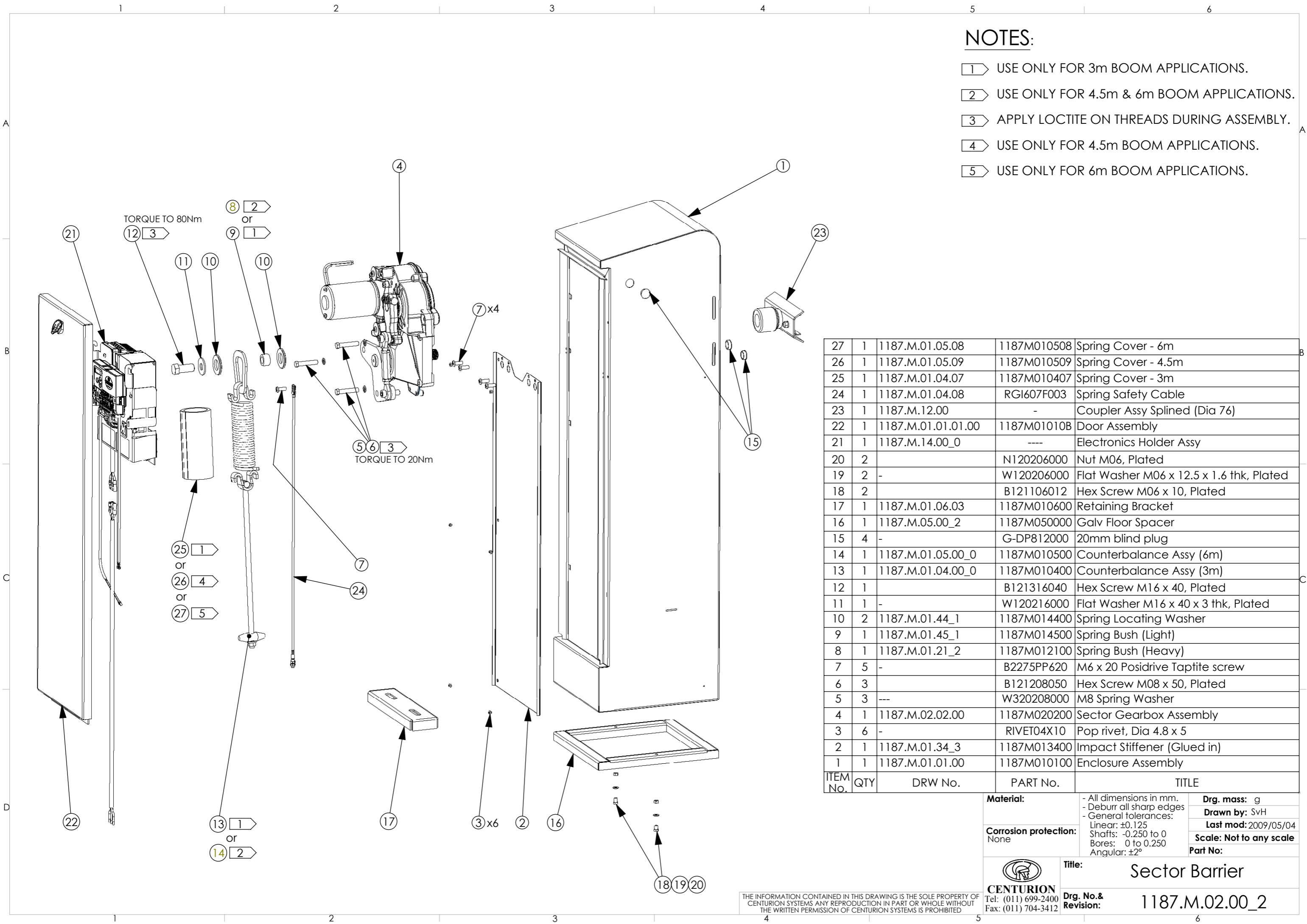


NOTES:

- ① USE ONLY FOR 3m BOOM APPLICATIONS.
- ② USE ONLY FOR 4.5m & 6m BOOM APPLICATIONS.
- ③ APPLY LOCTITE ON THREADS DURING ASSEMBLY.
- ④ USE ONLY FOR 4.5m BOOM APPLICATIONS.
- ⑤ USE ONLY FOR 6m BOOM APPLICATIONS.



ITEM No.	QTY	DRW No.	PART No.	TITLE
27	1	1187.M.01.05.08	1187M010508	Spring Cover - 6m
26	1	1187.M.01.05.09	1187M010509	Spring Cover - 4.5m
25	1	1187.M.01.04.07	1187M010407	Spring Cover - 3m
24	1	1187.M.01.04.08	RG1607F003	Spring Safety Cable
23	1	1187.M.12.00	-	Coupler Assy Splined (Dia 76)
22	1	1187.M.01.01.01.00	1187M01010B	Door Assembly
21	1	1187.M.14.00_0	----	Electronics Holder Assy
20	2		N120206000	Nut M06, Plated
19	2	-	W120206000	Flat Washer M06 x 12.5 x 1.6 thk, Plated
18	2		B121106012	Hex Screw M06 x 10, Plated
17	1	1187.M.01.06.03	1187M010600	Retaining Bracket
16	1	1187.M.05.00_2	1187M050000	Galv Floor Spacer
15	4	-	G-DP812000	20mm blind plug
14	1	1187.M.01.05.00_0	1187M010500	Counterbalance Assy (6m)
13	1	1187.M.01.04.00_0	1187M010400	Counterbalance Assy (3m)
12	1		B121316040	Hex Screw M16 x 40, Plated
11	1	-	W120216000	Flat Washer M16 x 40 x 3 thk, Plated
10	2	1187.M.01.44_1	1187M014400	Spring Locating Washer
9	1	1187.M.01.45_1	1187M014500	Spring Bush (Light)
8	1	1187.M.01.21_2	1187M012100	Spring Bush (Heavy)
7	5	-	B2275PP620	M6 x 20 Posidrive Taptite screw
6	3		B121208050	Hex Screw M08 x 50, Plated
5	3	---	W320208000	M8 Spring Washer
4	1	1187.M.02.02.00	1187M020200	Sector Gearbox Assembly
3	6	-	RIVET04X10	Pop rivet, Dia 4.8 x 5
2	1	1187.M.01.34_3	1187M013400	Impact Stiffener (Glued in)
1	1	1187.M.01.01.00	1187M010100	Enclosure Assembly

Material: - All dimensions in mm.
- Deburr all sharp edges
- General tolerances:
Linear: ±0.125
Shafts: -0.250 to 0
Bores: 0 to 0.250
Angular: ±2°

Corrosion protection: None

Material: - All dimensions in mm.
- Deburr all sharp edges
- General tolerances:
Linear: ±0.125
Shafts: -0.250 to 0
Bores: 0 to 0.250
Angular: ±2°

Dr. mass: g
Drawn by: SvH
Last mod: 2009/05/04
Scale: Not to any scale
Part No:

CENTURION
Tel: (011) 699-2400
Fax: (011) 704-3412

Title: Sector Barrier
Dr. No. & Revision: 1187.M.02.00_2